

# REVAMPED. REVITALIZED. REINVENTED.

LTX 500v AND LTX 300v 1080p LCOS FRONT PROJECTORS

ANHEM®



“WARNING: Anthem gear may be addictive.”

– Eric Hetherington, *GoodSound!*

## LTX 500v

- NEW! ISF (Imaging Science Foundation) Certification
- NEW! 120-Hz Clear Motion Drive
- NEW! 3,000-Hour Lamp Life
- Native 50,000:1 Contrast Ratio
- THX® certified: Pre-calibrated Movie Mode settings optimized for DVD, Blu-ray and Broadcast

## LTX 300v

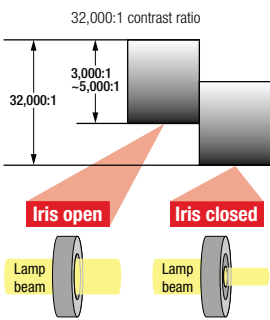
- NEW! 120-Hz Clear Motion Drive
- NEW! 3,000-Hour Lamp Life
- Native 30,000:1 Contrast Ratio

A full HD 1920 x 1080p ‘Reference’ point of view! The highest and latest standards in color accuracy, image brightness and clarity! Add an Anthem A/V processor to bring the scale and excitement of the cinema experience home. In addition to the new features listed at left, both models also feature:

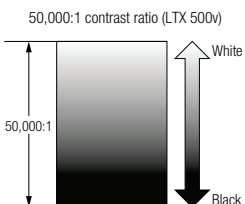
- 2x High-Precision Zoom Lens with Electronic Lens Shift, Motorized Focus and Auto Dust Cover
- Fully Digitally Driven 3-Panel 1920 x 1080p LCOS
- Superb Gray Scale Reproduction
- Exceptional Rendition of Color (LTX 500v interpolates colors individually by R,G,B,C,Y or M)
- Ultra-Wide True-Fit™ Screen Mode
- Efficient Ultra-Low-Noise Fan
- Dual 1080p HDMI v1.3 (Deep Color) Digital Inputs
- Two Trigger Functions (LTX 500v only): Screen or Motorized Anamorphic Lens (optional add-on)
- Auto-Illuminated Remote
- RS-232 Controllable
- Black Cabinet with Non-Reflective Front Panel



**Conventional projector with dynamic iris**



**LCOS Panel**



Peak whites and deep blacks appear on the same picture field, without resorting to artificial means.

**FULLY DIGITALLY DRIVEN 3-PANEL 1920 x 1080p LCOS**

The Anthem LTX 500v boasts a Native Contrast Ratio of 50,000:1, the highest available. With a Native Contrast Ratio of 30,000:1, the Anthem LTX 300v is more than capable when it comes to simultaneously displaying the complete range of image contrast.

Many manufacturers still employ the dynamic iris (*see left*) in projector design, artificially boosting peak values (resulting in lighter blacks) and darkening black levels (darkening peak values). In LTX projectors, the fully digitally driven 3-panel LCOS (Liquid Crystal on Silicon) engine delivers peak whites and deep blacks on the same picture field, without resorting to artificial means. Contrast is sharper and more vivid and color reproduction is extremely natural.

Liquid Crystal on Silicon is a superb choice for home theater projectors because of its inherent ability to display smaller pixels in closer association, eliminating annoying visual artifacts like 'screen door' effects. Unlike many projectors on the market, there is no color wheel or color dithering in Anthem projectors and no color rainbow effect, common on single-panel designs. Even on close ups, the picture is richer and smoother.

The LTX's LCOS engine also employs three individual 0.7-inch color light panels (Red, Green and Blue) to deliver color light to the screen simultaneously and flicker free.

Highly efficient lamps in LTX projectors — a brightness of 900 lumens in the LTX 500v and 1,000 lumens in the LTX 300v — offer the brightest, smoothest, highest-resolution picture available.



ccc=Certified Calibration Controls: also referred to as C3

**NEW! ISF CERTIFICATION — LTX 500v**

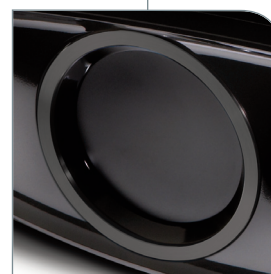
The **Imaging Science Foundation** is a pioneer and leader in improving home theater image quality through standardized color calibration. The new LTX 500v boasts ISF ccc certification enabling ISF-trained dealers to professionally calibrate the projector to ensure the most accurate and lifelike film and video content. All that is left for the end user to do is select ISF-standardized Day or Night Mode. Why two modes? AV equipment is often installed in rooms that lack professional light control. The dual option accommodates the two types of lighting. ISF calibration will not affect the projector's other picture modes.

Screen Adjust	
Corrects improper white balance derived from the reflective properties of the screen	
Off	Makes no correction.*
A	Corrects to slightly reddish.
B	Corrects to slightly greenish.
C	Corrects to slightly bluish.

\*("Off" is the default setting.)

**NEW! DOUBLE-SPEED 120-Hz CLEAR MOTION DRIVE TECHNOLOGY (both models)**

Not only does Clear Motion Drive technology result in a smoother, more fluid, 'ghost-free' picture by creating a 120-frames-per-second signal from a 50 fps signal. These added 'in-between' frames take nothing away from the original experience but create a smoother (horizontally and vertically) artifact-free experience. New screen adjustment mode options optimize both models for use with a number of different screen types (*see chart at left*).



Motorized lens cover: open and closed

**2x ZOOM ALL-GLASS LENS WITH MOTORIZED FOCUS AND AUTO DUST COVER**

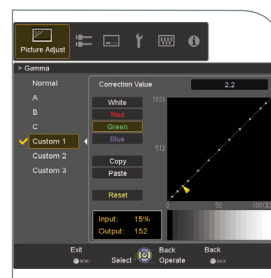
Suitable for 60" to 200" (diagonal) screen sizes.

The 2x zoom lens with motorized focus (controlled from the remote) makes setup and adjustment easy and convenient.

The large-diameter high-precision glass lens system features 17 separate elements in 15 groups, including 2 extra-low dispersion (ED) lenses to project a full and extraordinarily deep HD image. The high-precision lens also helps minimize color error — no unwanted 'fringes' of color or color bleeding are visible to mar the boundaries between dark and bright sections of the image. Finally ...

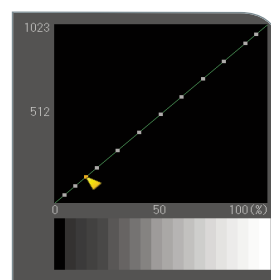
Multi-step fixed-aperture brightness controls (sixteen-step in the LTX 500v and three-step in the LTX 300v) eliminate light leakage as well as allowing for brightness adjustment to match personal preferences or ambient light levels.

The motorized lens cover opens and closes with power ON/OFF, preventing dust and dirt from entering the lens. This is a particularly helpful feature if the projector is to be mounted to the ceiling.



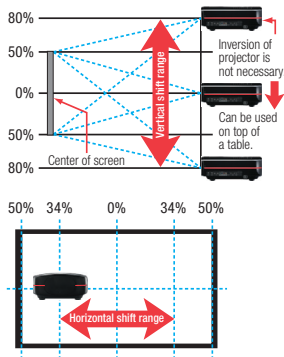
**CUSTOMIZED ON-SCREEN GAMMA CONTROL**

Adjust as you watch! Using the remote, the user is able to manually adjust the gamma curve to suit individual preferences or the room's ambient lighting using the on-screen display. Essentially altering luminance levels 'on the fly', the user can increase the contrast or the brightness levels. Up to three settings can be adjusted and saved for future use.



**SUPERB GRAY SCALE REPRODUCTION**

To reproduce a more realistic image, gray scale can be adjusted manually and the changes observed immediately via the on-screen gamma curve graph. Dark areas can be raised and detail enhanced in bright white areas. Color reproduction can be easily adjusted to suit personal tastes since the three colors (R,G and B) can be individually adjusted using the on-screen display.



### ELECTRONIC LENS SHIFT

Anthem's LTX projectors are designed for easy installation. The motorized Lens Shift option (accessible using the remote) allows the user to move the lens horizontally or vertically within the projector housing to accommodate installation in even the most challenging situations.

The  $\pm 80\%$  Vertical Shift option allows the projector to be mounted above the screen, without having to invert it (*see left*). The  $\pm 34\%$  Horizontal Shift offers additional flexibility in a wide range of situations (*also, see left*). And all of this shifting happens without a hint of image compression or image conversion to adversely affect edge pixels.

If the lens must be positioned outside the coverage area, a Digital Keystone feature, which offers a  $\pm 30\%$  vertical and  $\pm 40\%$  horizontal adjustment, removes distortion, helping to make the images appear more natural.

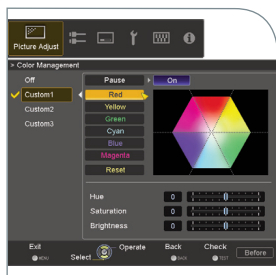


### INSANELY FLEXIBLE INSTALLATION IN SO MANY WAYS ...

- All connections are on the side panel ... even if you can't position the projector on the ceiling, you can install it directly against the back wall without worrying about leaving room for plugs and wires.
- In addition to 2 HDMI inputs, inputs also include 1 S-Video, 1 Composite and 1 Component Y-Pb-Pr (RCA) Video.
- The LTX 500v with its customizable trigger system accommodates optional add-on motorized anamorphic lens systems to use the full resolution of the display for viewing 2.4:1 movies.

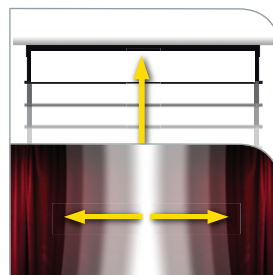
### ILLUMINATED REMOTE CONTROL

All buttons on the remote light up when you push the light button, making it easy to operate in the room when the lights are turned off.



### EXCEPTIONAL RENDITION OF COLOR

Color management in LTX projectors inserts colors individually in three separate axes of color phase, chroma saturation and brightness to ensure best possible color reproduction. The LTX 500v interpolates colors individually by R,G,B,C,Y or M. Custom color setup can be done via the on-screen menu with the ability to save up to three customized color settings for future use.



### DUAL-FUNCTION 12-VOLT TRIGGER — LTX 500v

Allows the user to move the projection screen up or down, or open and close curtains, while power to the projector unit is turned off. A secondary trigger function can be menu-activated to control an optional motorized anamorphic lens in concert with the True-Fit™ wide screen mode so that movies in a 2.4:1 aspect ratio can be seen in their gloriously full width.



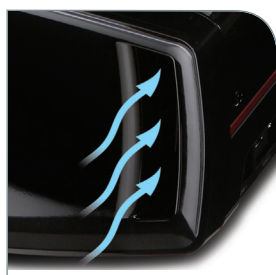
### ✓ TRUE-FIT™ WIDE SCREEN MODE

Wide 'cinema style' image capability! Movies with a 2.4:1 aspect ratio can be seen in their gloriously full width (using all 1920 x 1080 pixels) and without letterbox bands or a compromise in image quality. The three LCOS panels ensure the expanded vertical image is perfectly adjusted for brightness and sharpness. The use of an optional anamorphic lens can stretch the image to fit its full extra-wide aspect ratio ... all the while preserving image integrity.



### DUAL HDMI INTERFACES

Two 1080p HDMI v1.3 (Deep Color) digital interfaces; CEC (Consumer Electronics Control) compatible.



### ULTRA-EFFICIENT FAN!

Operating in normal mode, the ultra-quiet 19 dB fan noise will register in the room as less than a soft whisper. Air inlet is at the front and exhaust vent at the side.



### USER-REPLACEABLE LAMP

- NEW! Lamp-life cycle: 3,000 hours (both models).
- Replacement is from the side ... quick and easy!
- 1/2 price coupon for replacement lamp included.

## Screen Size and Projection Distance

Determine the distance from the lens to the screen to achieve your desired screen size.

This unit uses a 2.0x power zoom lens for projection.

### Relationship Between Projection Screen Size and Projection Distance

Projection Screen Size (Diagonal Length) Aspect Ratio 16:9	Approximate Projection Distance W (Wide) to T (Tele)
60" / 1.52m	5.9ft / 1.8m to 12ft / 3.7m
70" / 1.78m	6.9ft / 2.1m to 14ft / 4.3m
80" / 2.03m	7.9ft / 2.4m to 16ft / 4.9m
90" / 2.29m	8.9ft / 2.7m to 18ft / 5.5m
100" / 2.54m	9.9ft / 3.0m to 20ft / 6.1m
110" / 2.79m	10.9ft / 3.3m to 22.3ft / 6.8m
120" / 3.05m	11.8ft / 3.6m to 24.3ft / 7.4m
130" / 3.30m	12.8ft / 3.9m to 26.2ft / 8.0m
140" / 3.56m	13.8ft / 4.2m to 28.2ft / 8.6m
150" / 3.81m	14.8ft / 4.5m to 30.2ft / 9.2m
160" / 4.06m	15.7ft / 4.8m to 32.2ft / 9.8m
170" / 4.32m	16.7ft / 5.1m to 34.4ft / 10.5m
180" / 4.57m	18.0ft / 5.5m to 36.3ft / 11.1m
190" / 4.83m	19.0ft / 5.8m to 38.4ft / 11.7m
200" / 5.08m	20.0ft / 6.1m to 40.4ft / 12.3m

- The projection distances in the table are provided only as a guide. Use them as a reference during installation.
- To adjust the installation, use a projected image of aspect ratio 16:9.

## TECHNICAL SPECIFICATIONS

LTX 300v | LTX 500v | *(all models, unless otherwise specified)*

### Display Panel

Clear Motion Drive	.120 Hz
Panel Size and Type	.0.7 inch, LCOS
Aspect Ratio	.16:9
Resolution	.1920 x 1080

**Zoom Ratio** .1.4 – 2.8 (2x)

### Light Output

LTX 300v	.1,000 lumens
LTX 500v	.900 lumens

### Contrast Ratio

LTX 300v	.30,000:1
LTX 500v	.50,000:1

### Projection

Screen Size	.Approx. 60" – 200" diagonal (Aspect ratio 16:9)
Distance	.Approx. 1.8 m – 12 m

### PC Input Signal

Digital	.VGA/SVGA/XGA/WXGA/WXGA+/SXGA/WSXGA+/WUXGA
Analog	.VGA/SVGA/XGA/WXGA/WXGA+/SXGA/SXGA+/WSXGA+

### INPUTS

HDMI	.2x version 1.3
HDMI Input	.480i/p, 576i/p, 720p, 1080i/p (24/50/60 Hz)
Component / RGB	.Yes
S-Video	.Yes
Composite	.Yes
Analog Video Input	.480i/p, 576i/p, 720p, 1080i/p (50/60 Hz)

### VIDEO

#### THX® Certified

LTX 300v	.No
LTX 500v	.Yes

**Digital Keystone Correction** .Yes

#### ISF® Day / Night Modes

LTX 300v	.No
LTX 500v	.Yes

### FAN NOISE

**Level (Normal Mode)** .19 dB

### CONTROLS

**RS-232** .Yes

**Remote Control** .Yes – Backlit

#### 12 V Trigger

LTX 300v	.No
LTX 500v	.Yes

**OSD Language** .English, French, Spanish, German, Italian, Portuguese, Dutch, Swedish, Norwegian, Chinese, Japanese, Russian

### LAMP

**Type** .Ultra-High-Pressure Mercury

**Power Consumption** .200 W

**Lifetime** .3,000 hrs

*(Contact Anthem Customer Service for replacement lamps)*

### OPERATING ENVIRONMENT

**Temperature** .5°C – 35°C

**Humidity** .20% – 80%, no condensation

**Installation Height** .Below 1,524 m

**Storage Temperature** .-10°C – 60°C

### POWER REQUIREMENTS

**Voltage** .110 – 240 VAC (50/60 Hz)

**Power Consumption** .280 W (Standby Mode 1 W)

### DIMENSIONS

**Height** .6-5/8 inches (16.7 cm)

**Width** .14-3/8 inches (36.5 cm)

**Depth** .18-7/8 inches (47.8 cm)

**Weight (unpacked)** .11 kg

### ACCESSORIES

**Remote Control** .Included

**2 x 'AAA' batteries (for Remote)** .Included

**Power Cord** .Included